

IDENTIFYING PLANKTON

Phytoplankton

Diatoms



Biddulphia sp

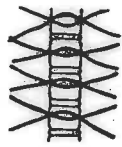


Needle shaped plankton *Pseudo-nitzschia* sp

Disc-like plankton
Cocconeis sp



Star-shaped plankton
Asterionella sp



Chaetoceros sp



Thalassiothrix sp

Dinoflagellates



Noctiluca sp



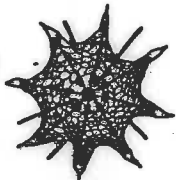
Anchor-shaped plankton
Ceratium sp



Protozoa



A foram
Globigerina sp



Radiolaria sp

Zooplankton

Cnidaria



Planulabrancheia sp



Aurelia sp

Ctenophora



Liriope sp



Diphyes sp

Annelida



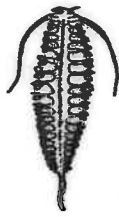
Trochophore larva



Nereis post larva



Sagitta



Terebrantia

Mollusca

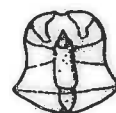


Gastropod larva

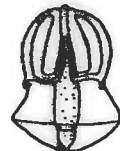


Bivalve larva

Hemichordata



Tornaria larva



Chordata

Fish larva

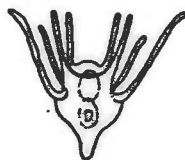


Chaetognatha



Sagitta sp

Echinodermata



Ophiopluteus larva

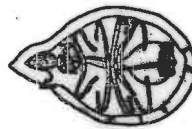
Urochordata



Ophiopleura



Fritillaria

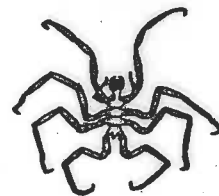


Salp



Doliolite

Chelicerata



Sea spider

Zooplankton (cont'd)

Crustacea

Cladocerans
(water fleas)



Evaena sp

Panola sp



Ostracods (mussel
shrimps)



Pyrocypris sp



Eusanchocalis sp

Cirripedes (barnacle
larva)



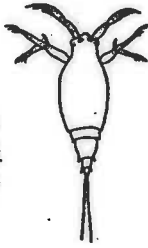
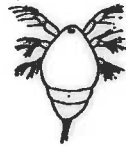
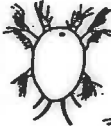
Mysid shrimp



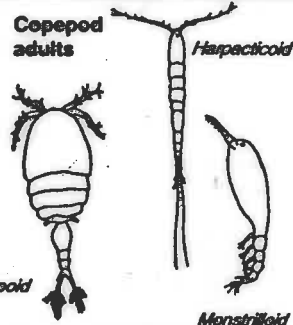
Hemimysidella sp



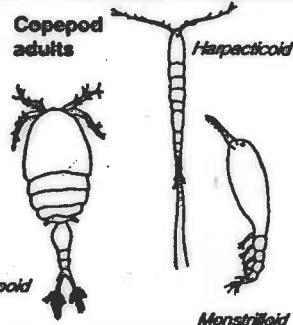
Copepod larva



Calanoid



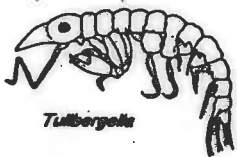
Cyclopoid



Harpacticoid

Monstrilloid

Amphipods



Tullbergella



Hyperiia



Caprellid



Synopia

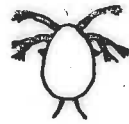
Euphausiids



Larva

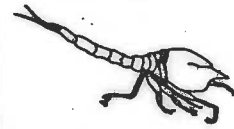


Larva

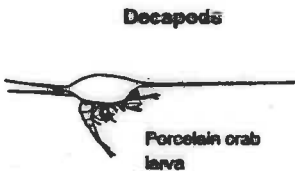


Adult

Cumacean



Pistol shrimp
larva



Porcelain crab
larva



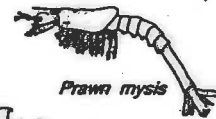
Hermit crab larvae



Prawn nauplius



Prawn
zoea



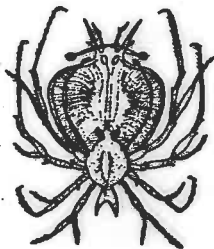
Prawn mysis



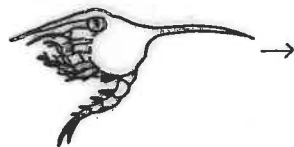
Ghost shrimp
(*Lucifer*)



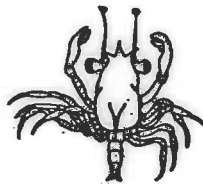
Prawn post larva



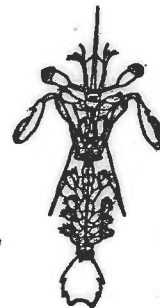
Leber larva



Crab (zoea)
larva



Crab (megalopod)
larva



Mantis shrimp
larva